



NATA LIGHTING CO.,LTD.
www.nata.cn
Email:info@nata.cn
Tel:+86-750-3770000 Fax:+86-750-3771111
Address:380JinOu Road,GaoXin Zone,Jiang Men City,Guangdong,China

Nata

LumCAT: 1-1062-N	
Luminaire: 92.361.000	
Report No: 220519-B003	Voltage(V): 38.1900
Test No: 220519-C003	Current(A): 0.3610
LampCAT: CREE CXA1507	Power (W): 13.7860
Lamp flux(lm): 1272.8	PF: 0.0000
Number of Lamps: 1	Ballast type: DC
Length(mm): 43	Width(mm): 43
Phm Type: C	Height(mm): 0

Photometric Results

Lumens(lm): 1086.42
Efficiency(%): 85.36%
Lumens(lm)/Power(W): 78.81
Central intensity(cd): 2748.484
Maximum intensity(cd): 2748.484
Angle of maximum intensity: C=0.0 γ =0.0
Beam Angle(50%Imax): [C0/180]Total=35.3
 [C90/270]Total=35.3
Field angle(10%Imax): [C0/180]Total=59.1
 [C90/270]Total=59.1
Maximum s/h(1/2): C0_180=0.58 C90_270=0.58
Maximum s/h(1/4): C0_180=0.58 C90_270=0.58
Up flux rate of lamp(%): 0.00%
Down flux rate of lamp(%): 85.36%
Up flux rate of LUM(%): - -
Down flux rate of LUM(%): 100.00%
CIE Type : Direct lighting
Output flux ratio in π solid angle : 98.110%

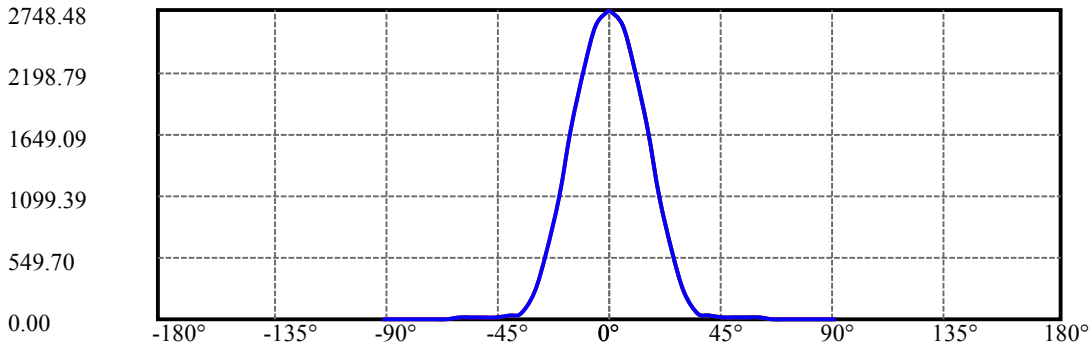
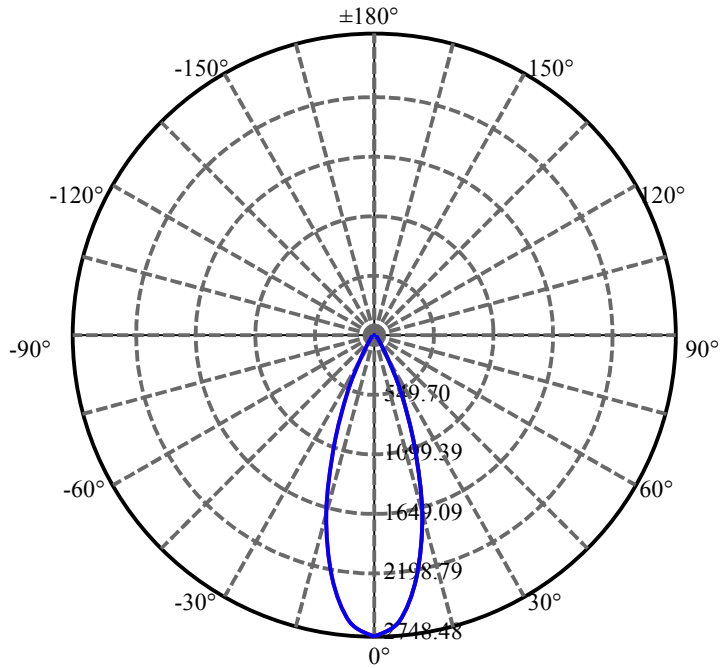
$\gamma(^{\circ})$	Average I(cd)	Zonal F(lm)	Sum F(lm)	Eff Flux(%)	Eff Sum(%)
0.0	2748.484	0.000	0	.000%	.000%
5.0	2613.891	64.106	64.106	5.037%	5.901%
10.0	2244.095	173.785	237.891	13.654%	21.897%
15.0	1692.277	233.503	471.394	18.346%	43.390%
20.0	1088.190	229.150	700.544	18.004%	64.482%
25.0	583.158	175.294	875.837	13.773%	80.617%
30.0	244.621	104.756	980.593	8.231%	90.259%
35.0	47.279	42.984	1023.578	3.377%	94.216%
40.0	30.302	12.944	1036.522	1.017%	95.407%
45.0	21.593	9.609	1046.13	.755%	96.292%
50.0	16.783	7.754	1053.885	.609%	97.005%
55.0	13.205	6.520	1060.405	.512%	97.606%
60.0	10.524	5.485	1065.89	.431%	98.110%
65.0	8.388	4.597	1070.488	.361%	98.534%
70.0	7.058	3.911	1074.399	.307%	98.894%
75.0	6.110	3.442	1077.841	.270%	99.210%
80.0	5.520	3.112	1080.953	.244%	99.497%
85.0	4.989	2.856	1083.808	.224%	99.760%
90.0	4.549	2.612	1086.42	.205%	100.000%

ZONAL LUMEN SUMMARY

Zone	Lumens	%Lamp	%Fixt
0-30	980.59	77.04%	90.26%
0-40	1036.52	81.44%	95.41%
0-60	1065.89	83.75%	98.11%
0-90	1083.81	85.15%	99.76%
0-120	1083.81	85.15%	99.76%
0-180	1086.42	85.36%	100.00%
60-90	23.40	1.84%	2.15%
90-120	0.00	0.00%	0.00%
90-130	0.00	0.00%	0.00%
90-150	0.00	0.00%	0.00%
90-180	0.00	0.00%	0.00%
0-24.81	869.14	68.29%	80.00%

ZONAL LUMEN SUMMARY

0-10	237.89
10-20	462.65
20-30	280.05
30-40	55.93
40-50	17.36
50-60	12.01
60-70	8.51
70-80	6.55
80-90	2.86
90-100	0.00
100-110	0.00
110-120	0.00
120-130	0.00
130-140	0.00
140-150	0.00
150-160	0.00
160-170	0.00
170-180	0.00



C0(Max): —————

C0/C180: —————

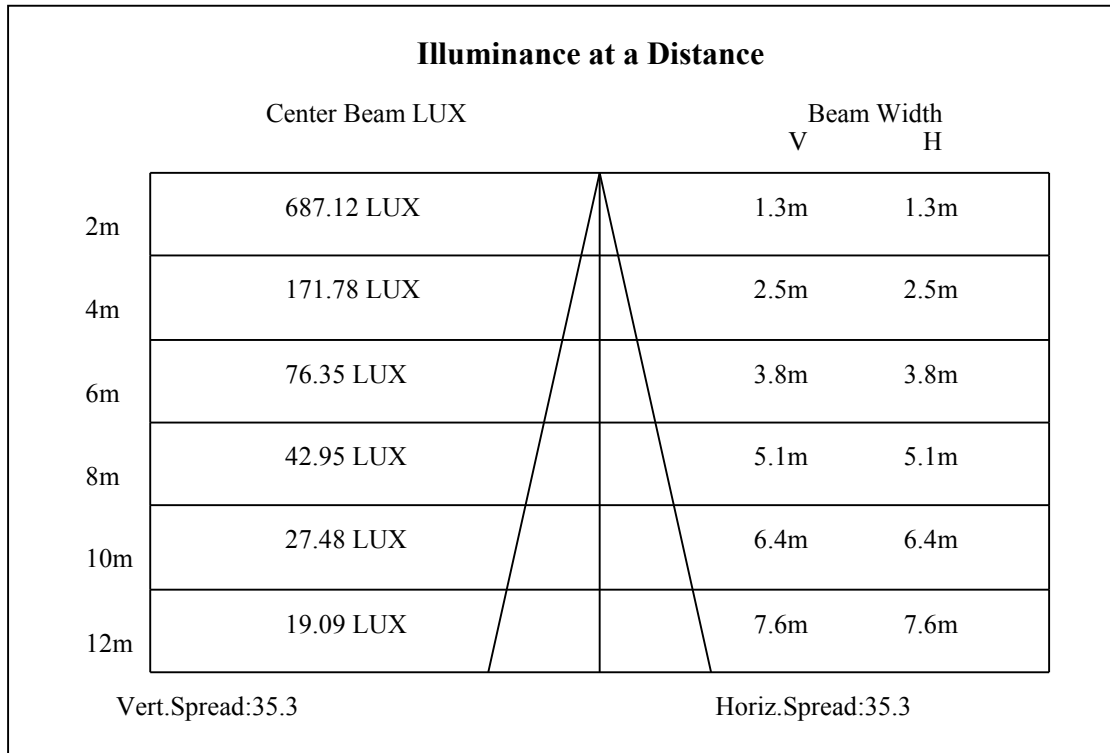
C90/C270: —————

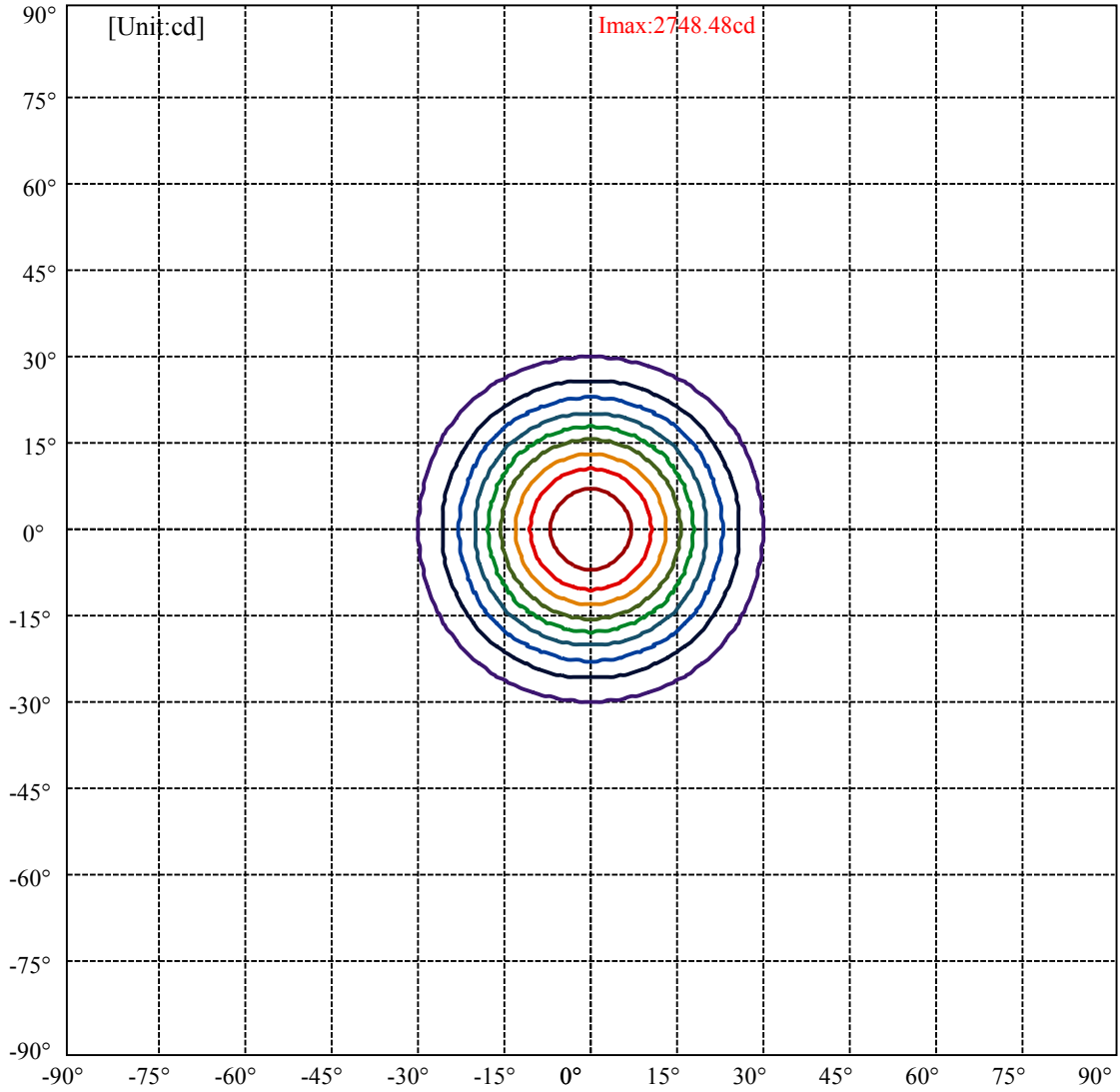
Field angle(10%Imax):C0/180Left:29.6 Right:29.6

:C90/270Left:29.6 Right:29.6

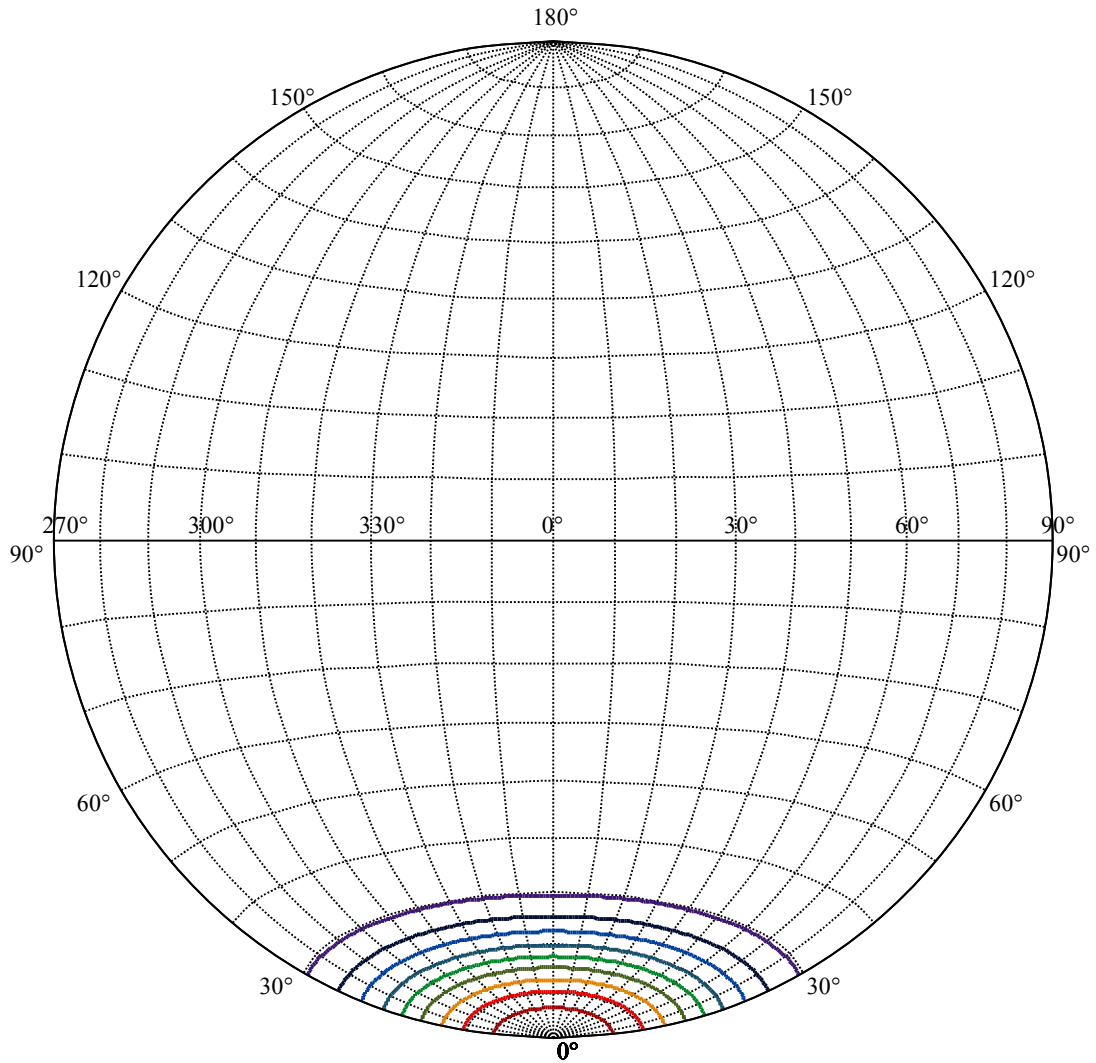
Beam Angle(50%Imax):C0/180Left:17.6 Right:17.6

:C90/270Left:17.6 Right:17.6





(10%Imax) 274.848	—
(20%Imax) 549.697	—
(30%Imax) 824.545	—
(40%Imax) 1099.39	—
(50%Imax) 1374.24	—
(60%Imax) 1649.09	—
(70%Imax) 1923.94	—
(80%Imax) 2198.79	—
(90%Imax) 2473.64	—



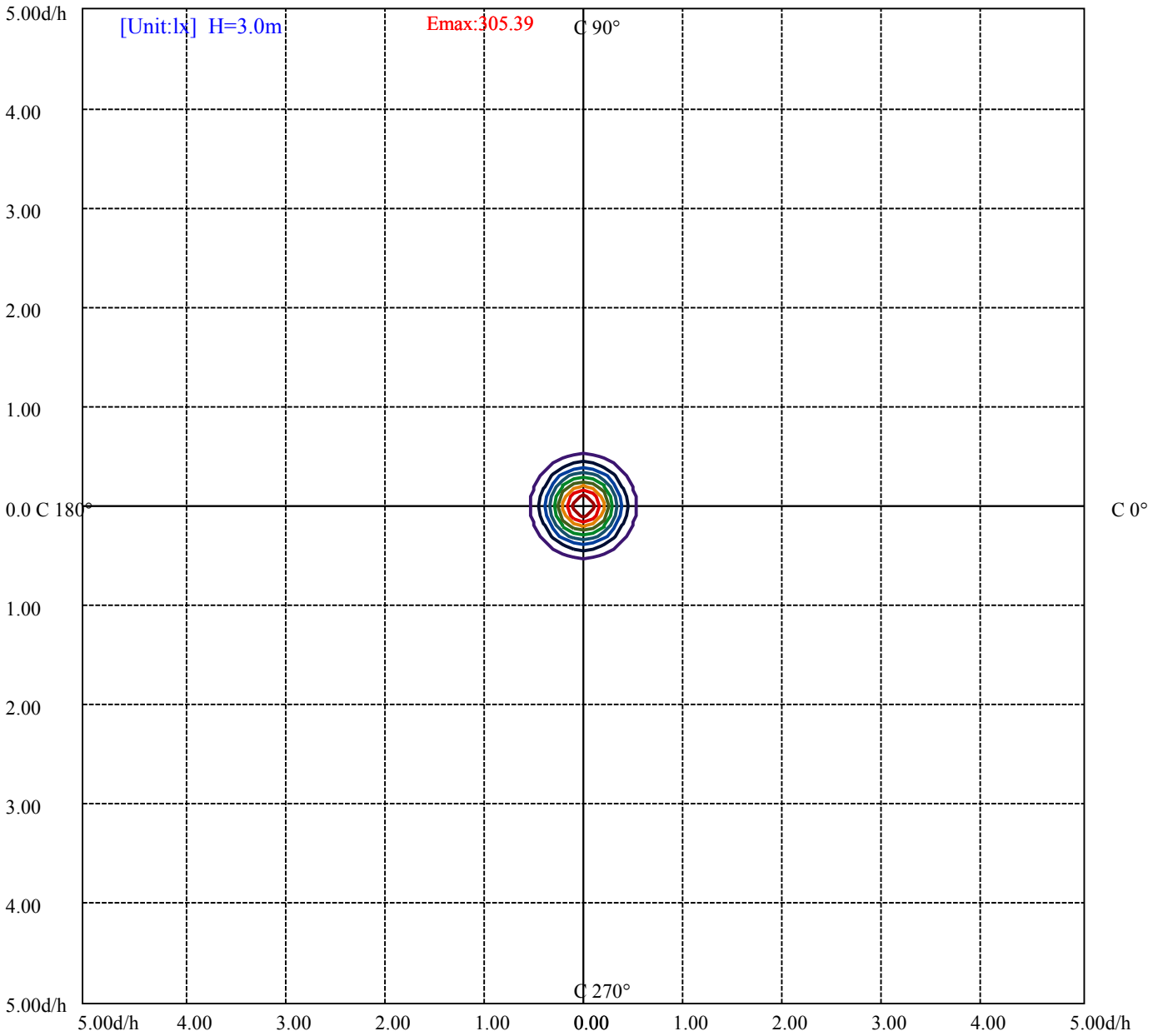
House

[Unit:cd]

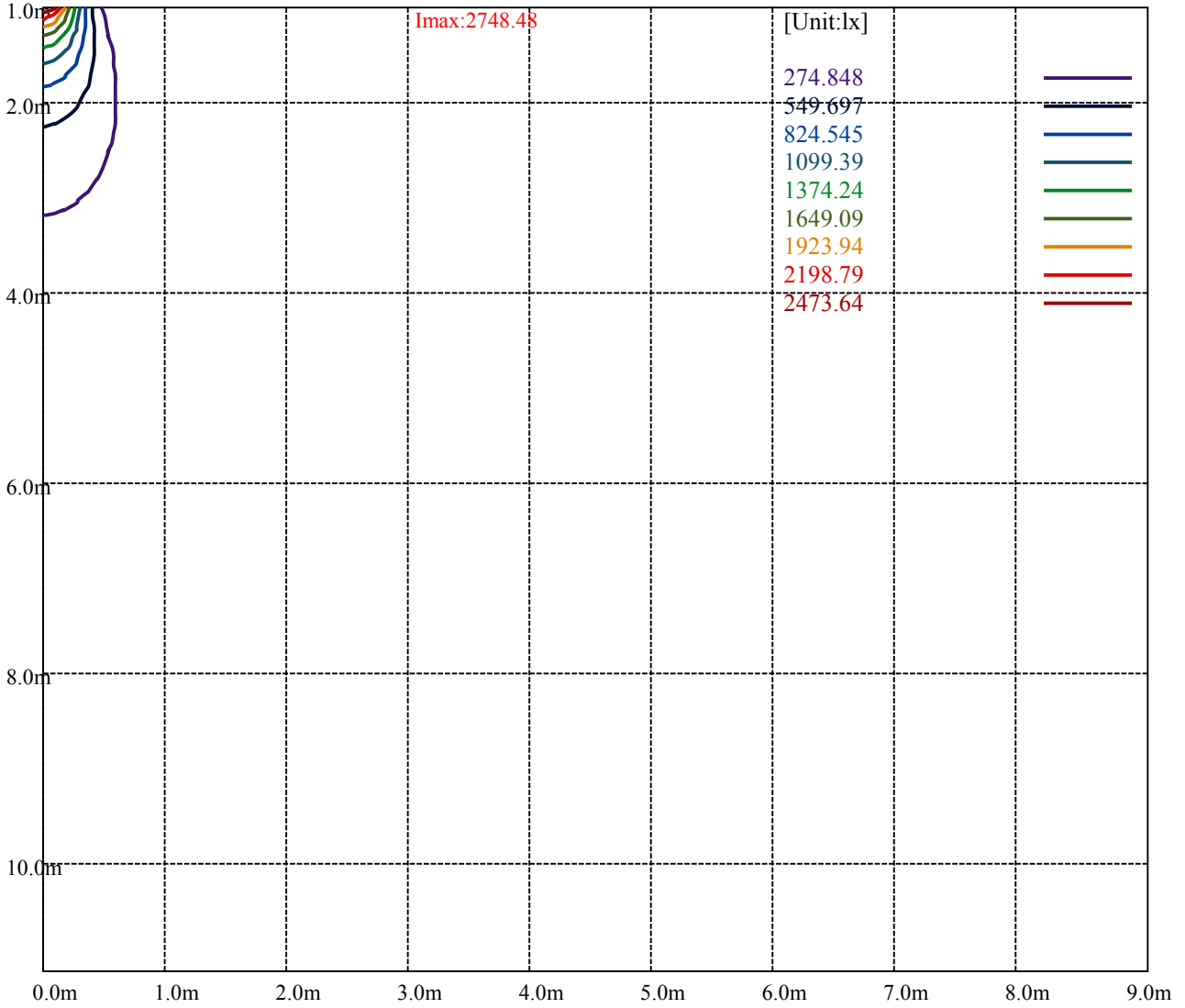
Road

Imax:2748.48

(10%Imax) 274.848	—
(20%Imax) 549.697	—
(30%Imax) 824.545	—
(40%Imax) 1099.39	—
(50%Imax) 1374.24	—
(60%Imax) 1649.09	—
(70%Imax) 1923.94	—
(80%Imax) 2198.79	—
(90%Imax) 2473.64	—



(10%Emax) 30.53867	—
(20%Emax) 61.07733	—
(30%Emax) 91.616	—
(40%Emax) 122.1544	—
(50%Emax) 152.6933	—
(60%Emax) 183.2322	—
(70%Emax) 213.7711	—
(80%Emax) 244.3089	—
(90%Emax) 274.8478	—



Luminance Table

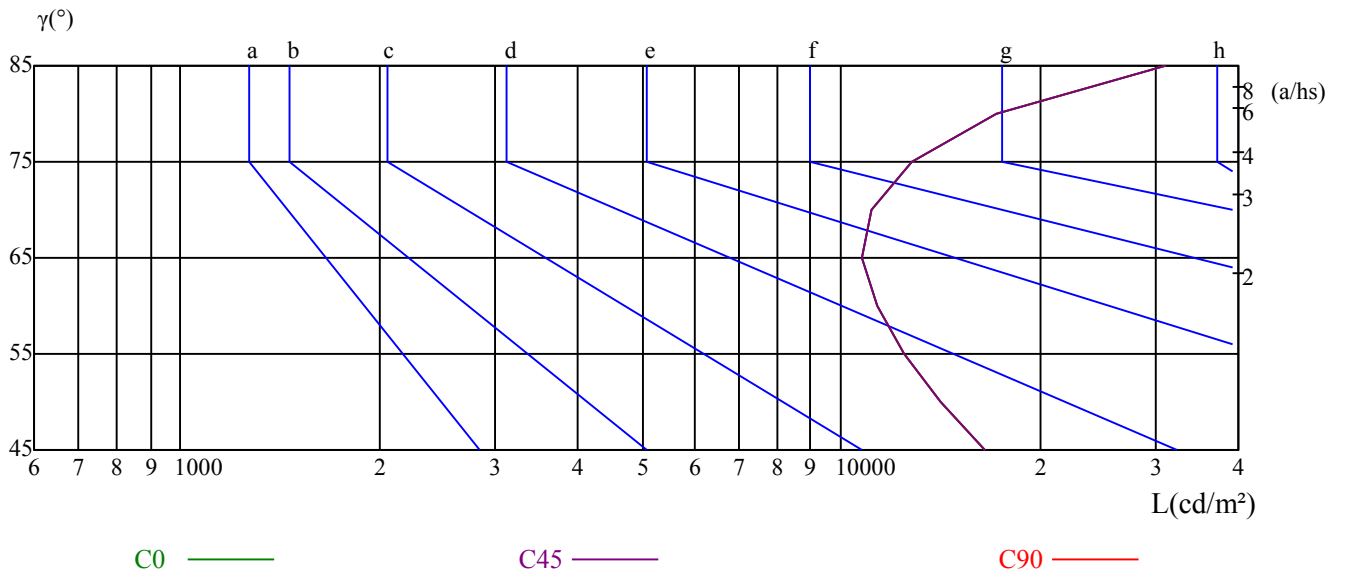
γ	45	50	55	60	65	70	75	80	85
C0	16516	14121	12452	11383	10734	11161	12767	17191	30961
C45	16516	14121	12452	11383	10734	11161	12767	17191	30961
C90	16516	14121	12452	11383	10734	11161	12767	17191	30961

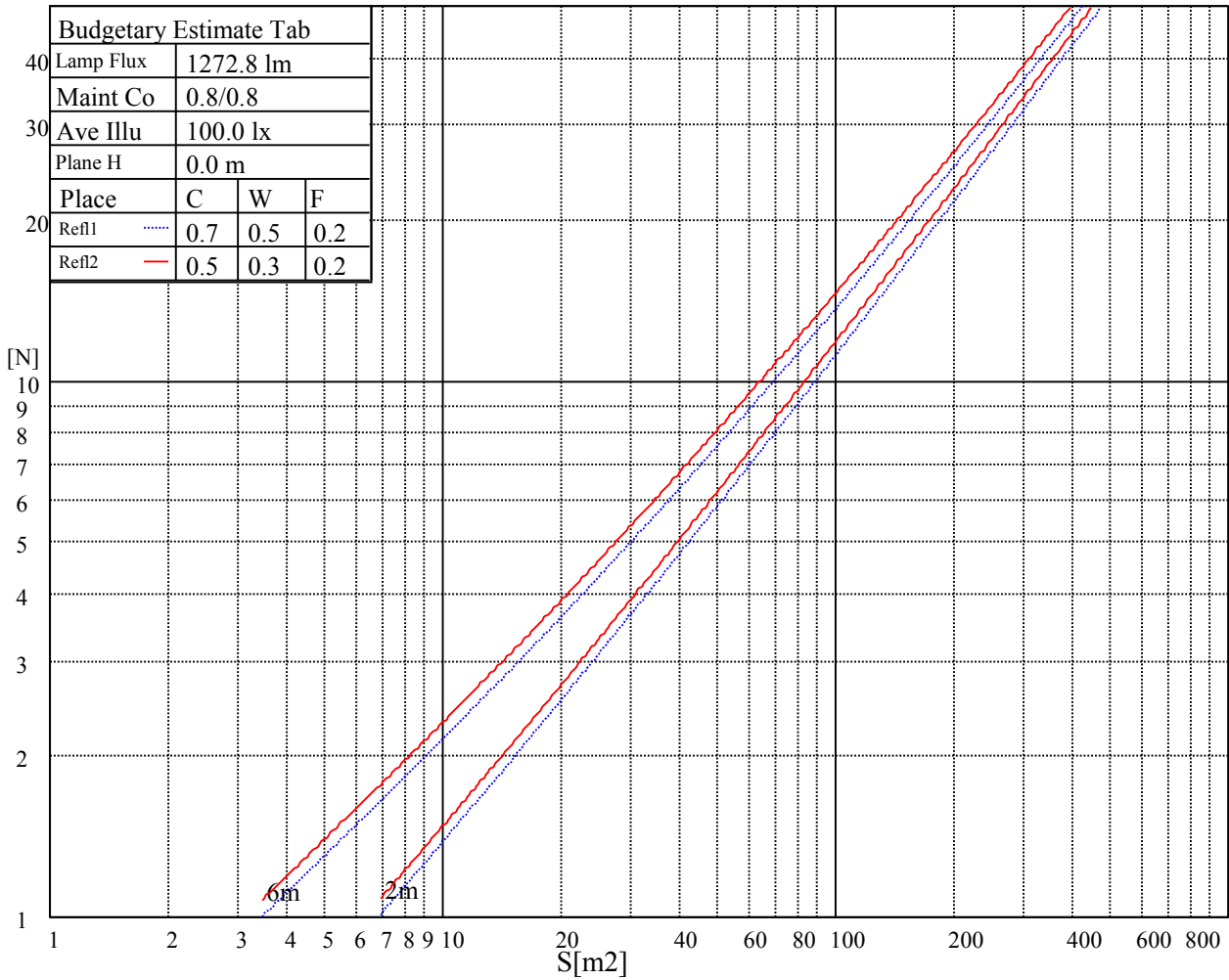
L(Hor)(65)	L(Ver)(65)	L45(65)	L(Hor)(75)	L(Ver)(75)	L45(75)	L(Hor)(85)	L(Ver)(85)	L45(85)
10734	10734	10734	12767	12767	12767	30961	30961	30961

Glare Table

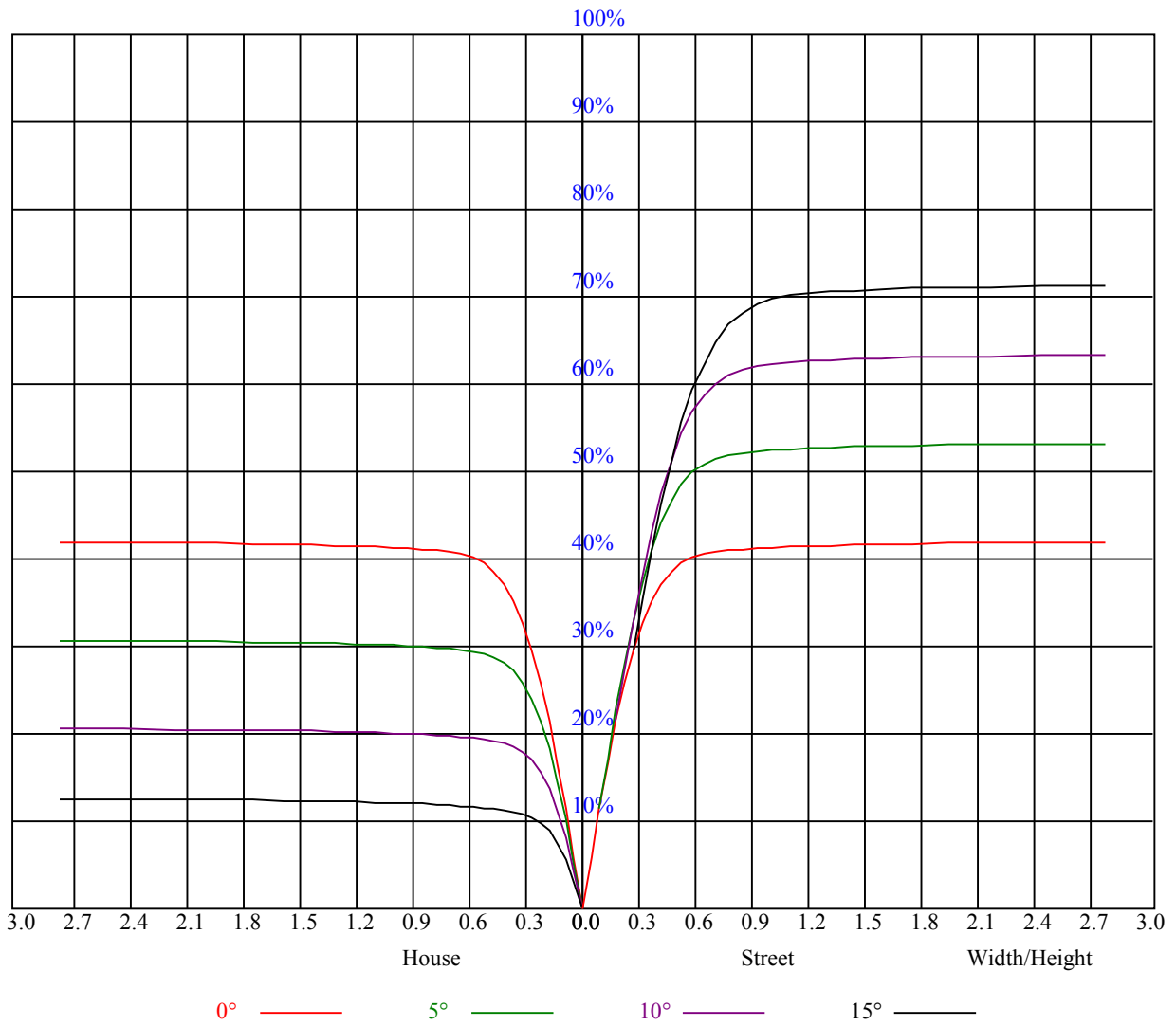
Glare	Quality	Service Values Illuminance(lx)							
1.15	A	2000	1000	500	<=300				
1.5	B		2000	1000	500	<=300			
1.85	C			2000	1000	500	<=300		
2.2	D				2000	1000	500	<=300	
2.55	E					2000	1000	500	<=300
		a	b	c	d	e	f	g	h

Luminance Limiting Curve





RHOCC	80			70			50			30			10			0
RHOW	50	30	10	50	30	10	50	30	10	50	30	10	50	30	10	0
RCR	COEFFICIENTS OF UTILIZATION RHOFC=20 CU															
0	1.02	1.02	1.02	0.99	0.99	0.99	0.95	0.95	0.95	0.91	0.91	0.91	0.87	0.87	0.87	0.85
1	0.95	0.93	0.92	0.93	0.92	0.90	0.90	0.89	0.87	0.87	0.86	0.85	0.84	0.83	0.82	0.81
2	0.90	0.87	0.84	0.88	0.86	0.83	0.86	0.83	0.82	0.83	0.81	0.80	0.81	0.79	0.78	0.77
3	0.85	0.81	0.79	0.84	0.81	0.78	0.82	0.79	0.77	0.80	0.77	0.76	0.78	0.76	0.74	0.73
4	0.81	0.77	0.74	0.80	0.76	0.73	0.78	0.75	0.73	0.77	0.74	0.72	0.75	0.73	0.71	0.70
5	0.77	0.73	0.70	0.76	0.73	0.70	0.75	0.72	0.69	0.74	0.71	0.68	0.72	0.70	0.68	0.67
6	0.74	0.70	0.67	0.73	0.69	0.66	0.72	0.68	0.66	0.71	0.68	0.65	0.70	0.67	0.65	0.64
7	0.71	0.66	0.64	0.70	0.66	0.63	0.69	0.66	0.63	0.68	0.65	0.63	0.67	0.65	0.62	0.61
8	0.68	0.64	0.61	0.67	0.63	0.61	0.67	0.63	0.60	0.66	0.63	0.60	0.65	0.62	0.60	0.59
9	0.65	0.61	0.58	0.65	0.61	0.58	0.64	0.61	0.58	0.63	0.60	0.58	0.63	0.60	0.58	0.57
10	0.63	0.59	0.56	0.62	0.59	0.56	0.62	0.58	0.56	0.61	0.58	0.56	0.61	0.58	0.56	0.55



Intensity data(cd)

C/ γ (°)	0.0	5.0	10.0	15.0	20.0	25.0	30.0	35.0	40.0
0.0	2732.50	2687.69	2372.79	1857.12	1247.64	692.54	320.87	57.72	34.30
45.0	2755.80	2623.15	2243.12	1697.58	1086.31	583.79	313.11	49.06	30.59
90.0	2753.41	2572.36	2155.88	1603.17	992.20	492.72	170.18	41.35	27.43
135.0	2752.22	2631.52	2247.31	1692.80	1108.42	598.13	320.28	48.04	29.46
180.0	2732.50	2527.55	2108.68	1521.91	945.59	470.20	129.72	39.32	27.07
225.0	2755.80	2600.45	2252.68	1689.21	1077.23	591.79	205.01	45.53	30.41
270.0	2753.41	2656.61	2329.77	1817.68	1171.75	665.65	308.92	50.01	32.39
315.0	2752.22	2611.80	2242.53	1658.74	1076.39	570.46	188.88	47.20	30.77
360.0	2732.50	2687.69	2372.79	1857.12	1247.64	692.54	320.87	57.72	34.30
C/ γ (°)	45.0	50.0	55.0	60.0	65.0	70.0	75.0	80.0	85.0
0.0	23.66	18.22	14.22	11.23	8.90	7.35	6.27	5.68	5.02
45.0	21.75	16.79	13.09	10.64	8.37	7.05	6.09	5.50	4.90
90.0	20.44	16.07	12.67	10.16	8.13	6.87	5.98	5.38	4.90
135.0	20.85	16.31	12.97	10.34	8.25	7.05	6.04	5.50	4.84
180.0	19.72	15.42	12.25	9.80	7.89	6.75	5.92	5.32	4.84
225.0	21.63	16.73	13.15	10.52	8.43	7.05	6.15	5.56	5.14
270.0	22.71	17.51	13.86	10.93	8.60	7.23	6.27	5.56	5.08
315.0	21.99	17.21	13.44	10.58	8.54	7.11	6.15	5.68	5.20
360.0	23.66	18.22	14.22	11.23	8.90	7.35	6.27	5.68	5.02
C/ γ (°)	90.0								
0.0	4.54								
45.0	4.60								
90.0	4.54								
135.0	4.54								
180.0	4.48								
225.0	4.60								
270.0	4.54								
315.0	4.54								
360.0	4.54								